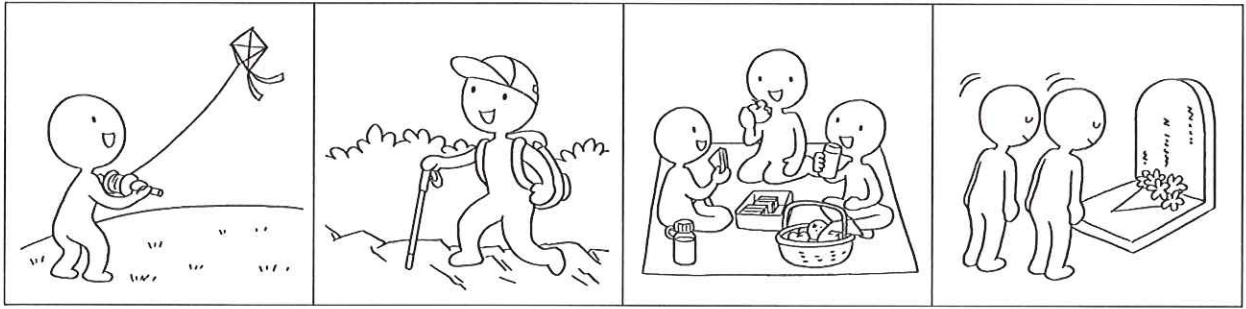




*3. What do people usually do at Chung Yeung Festival? (You can choose more than one answer.)



A

B

C

D

Give short answers. 6 marks (3 marks each)

4. When is Chung Yeung Festival this year?

*5. Does Maggie want to go hiking at Chung Yeung Festival?

TISA H Maggie is writing a story about Bess. Look at the pictures and finish the story. Use the words in the boxes to help you. 10 marks (2 marks each)

<p>1</p> <p>like / do crafts</p>	<p>2</p> <p>put / eggs / table</p>
<p>3</p> <p>play with / eggs / fall / floor</p>	<p>4</p>